



9 Hawthorne Road,
Barlborough S43 4ZD

£350,000



WILKINS VARDY

£350,000

NEW TO THE MARKET - THE COEL - EXECUTIVE FOUR BED DETACHED FAMILY HOME WITH DOUBLE GARAGE

The Coel is an impressive detached family home, which offers an impressive 1326 sq. ft. of accommodation which includes a fantastic open plan family room with bi-fold doors and generous living room. There is also a good sized utility/boot room.

Plot 117 boasts a generous plot and has a double width driveway giving access to the detached brick built double garage.

VIEW OUR SHOW HOME & SALES CENTRE THURSDAYS 2PM TIL 5PM, FRIDAYS 1PM UNTIL 5PM AND SATURDAYS 10AM UNTIL 3PM BY APPOINTMENT

- Plot 117- The Coel - 4 Bed Detached Family Home - 1326 sq.ft.
- 10 Year New Build Guarantee
- Four Good Sized Bedrooms
- Contemporary Kitchen
- Ground Floor WC & Utility
- Two Bathrooms
- Generous Family Room
- Off Street Parking & Double Garage
- Early 2023 Anticipated Completion
- VIRTUAL WALK THROUGH AVAILABLE

General

Gas Central Heating
uPVC Double Glazing
10 Year LABC New Build Guarantee
Fully Fitted Floor Coverings Throughout
Gross Internal Floor Area - 1326 sq. ft. (123.2 sq m)
Secondary School Catchment Area - Heritage High School
Council Tax Band - TBC
Current Energy Band - TBC
Reservation fee £500 (Half refundable). Early bird reservations will be considered from people thinking of selling their home. Conditions apply.
Note - Early 2023 anticipated completion date.

Images

The computer generated front image shown on this listing is for illustrative purposes only. Aspects of the design/finish could change.
The internal photographs are of Plot 90, the show home, which is a different house type. Again these images are being used for illustrative purposes only.

Ground Floor

Entrance Hall

With stairs rising up to the first floor accommodation.

Cloakroom/WC

Being part tiled and fitted with a white low flush WC and wash hand basin. Vinyl flooring.

Lounge

A superb front facing reception room.

Superb Breakfast Kitchen

A superb breakfast kitchen with French doors opening into the Family Room.
You will have the choice from an agreed range of contemporary style wall, drawer and base units with complementary work surfaces over with inset sink unit with mixer tap. (Subject to the time of reservation).
Integrated appliances to include a fridge/freezer, dishwasher, electric oven and hob with extractor over.
Space and plumbing is provided for a washing machine.
Vinyl flooring.

Family Room

A generous rear facing reception room having bi-fold doors overlooking and opening onto the rear of the property.
A further door opens to a ...

Utility Room

You will have the choice from an agreed range of contemporary style wall, drawer and base units with complementary work surfaces over with inset sink unit with mixer tap. (Subject to the time of reservation).
A door gives access onto the side and to the rear of the property.

On the First Floor

Spacious Landing

With skylight.

Master Bedroom

A generous front facing double bedroom with access into the...

En-Suite Shower Room

Being part tiled and comprising a shower cubicle with mixer shower, low flush wc and pedestal wash hand basin.
Vinyl flooring.

Bedroom Two

A good sized rear facing double bedroom.

Bedroom Three

A generous front facing double bedroom.

Bedroom Four

A rear facing good sized single/small double bedroom.

Family Bathroom

Being part tiled and fitted with a white 3-piece suite comprising of a panelled bath, low flush WC and pedestal wash hand basin.
Vinyl flooring.

Outside

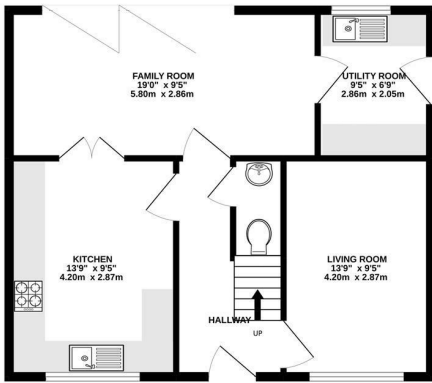
A driveway provides off street parking, which leads to the detached double garage. There will also be turfed gardens as shown on the landscaping plan.

The rear garden will comprise a paved patio and lawned garden bordered by timber post and rail fencing.

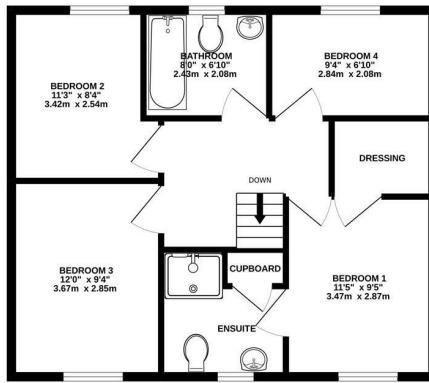
Street scene images may not include the subject property



GROUND FLOOR
663 sq.ft. (61.6 sq.m.) approx.



1ST FLOOR
663 sq.ft. (61.6 sq.m.) approx.



TOTAL FLOOR AREA: 1326sq.ft. (123.2 sq.m.) approx.

Whilst every attempt has been made to ensure the accuracy of the floorplan contained here, measurements of doors, windows, rooms and any other items are approximate and no responsibility is taken for any error, omission or mis-statement. This plan is for illustrative purposes only and should be used as such by any prospective purchaser. The services, systems and appliances shown have not been tested and no guarantee as to their operability or efficiency can be given.
Made with Metropix ©2022

Energy Efficiency Rating		
	Current	Potential
Very energy efficient - lower running costs		
(92 plus) A		
(81-91) B		
(69-80) C		
(55-68) D		
(39-54) E		
(21-38) F		
(1-20) G		
Not energy efficient - higher running costs		
England & Wales		EU Directive 2002/91/EC

Environmental Impact (CO ₂) Rating		
	Current	Potential
Very environmentally friendly - lower CO ₂ emissions		
(92 plus) A		
(81-91) B		
(69-80) C		
(55-68) D		
(39-54) E		
(21-38) F		
(1-20) G		
Not environmentally friendly - higher CO ₂ emissions		
England & Wales		EU Directive 2002/91/EC



VIEWINGS

All viewings are to be arranged through the agent.

The Consumer Protection (Amendment) Regulations 2014
Only items referred to in these particulars are included in the sale.

We are informed by the vendor that, at the time of our inspection, the central heating system, kitchen appliances, shower unit, plumbing installations, and electrical system referred to in these particulars were all in working order, however, no tests or checks have been carried out by ourselves and no warranty can therefore be given.

We have also been advised by the Vendor that any extensions, alterations or window replacements since 2002 have been undertaken with the necessary planning consent and building regulations approval.

Prospective purchasers are advised to make their own inquiries and investigations before finalising their offer to purchase.

SCHOOL CATCHMENT AREAS

Whilst the property is understood to be in the Heritage High School Catchment area, this is NOT a guarantee of admission and the prospective purchaser MUST make direct enquiries to Derbyshire County Council to ascertain the availability of places and ensure satisfaction of their entry criteria.

Validation Of Offers: In order to comply with our statutory obligations and The Ombudsman for Estate Agents Code of Practice, we are required to validate the financial circumstances of any offers made in respect of this property. This will usually entail anyone making an offer being interviewed by our Financial Consultant.

The details in this brochure are believed to be correct but do not constitute an offer, warranty or contract. All room dimensions are approximate. Rockcliffe Homes reserves the right to alter plans, specifications and elevations and to substitute materials during the course of construction. Where purchasers are offered a choice of finish/style, this is subject to the item concerned not having been fitted or ordered at the time of reservation.



CHESTERFIELD | 23 Glumangate, Chesterfield S40 1TX | **01246 270 123**

wilkins-varDY.co.uk