



HAWTHORNE
MEADOWS



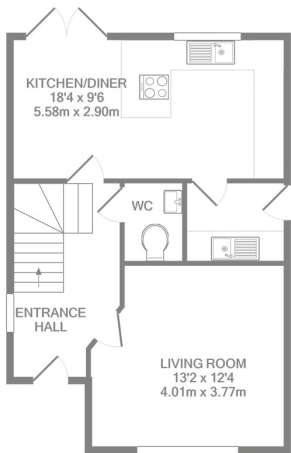
Hawthorne

The Lindon

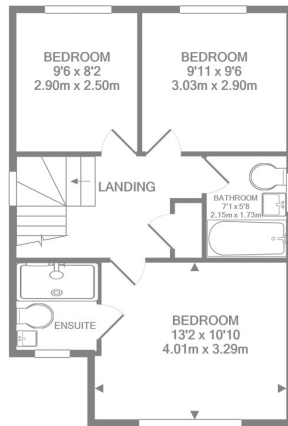
THREE BED DETACHED FAMILY HOME WITH GARAGE

The Lindon is a superb three bed roomed house which offers 955 sq.ft. of contemporary styled accommodation including an open plan kitchen diner with patio doors opening onto the rear garden as well as a generous living room.

Following the huge success of phase 1, we are proud to be launching the first few units on this second phase, with high specification new build housing in this superbly convenient location, just minutes from Junction 30 off the M1 motorway. Help To Buy will be available to First Time Buyers only.



GROUND FLOOR



FIRST FLOOR

FEATURES

- Show home virtual walk through available
- 10 Year new build guarantee
- Three bedrooms
- Open plan kitchen/diner
- Ground floor WC
- Modern bathroom
- Help To Buy available for First Time Buyers
- Garage & off street parking
- Convenient location
- Late spring 2021 completion

ROOM DIMENSIONS

Ground Floor

LOUNGE	4010 x 3760 mm	13'2 x 12'4
KITCHEN/DINER	5590 x 2900 mm	18'4 x 9'6

First Floor

MASTER BEDROOM	4010 x 3300 mm	13'2 x 10'10
BEDROOM 2	3020 x 2900 mm	9'11 x 9'6
BEDROOM 3	2900 x 2490 mm	9'6 x 8'2



HAWTHORNE
MEADOWS

www.hawthornemeadows.co.uk

Hawthorne Meadows, Chesterfield Road
Barlborough S43 4TT



WILKINS VARDY

For more details contact Wilkins Vardy

01246 270 123

info@wilkins-vardy.co.uk