



HAWTHORNE
MEADOWS



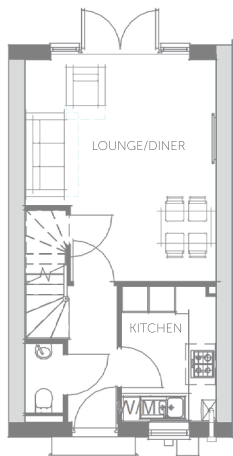
The Newland

The Newland

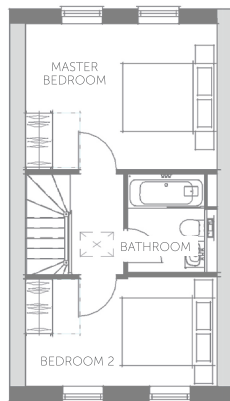
TWO BEDROOMED STARTER HOME

The Newland is a two bedroomed house which offers 734 sq.ft. of contemporary styled accommodation including an open plan lounge/diner with patio doors opening onto the rear garden. The property will also be fitted with a contemporary kitchen and bathroom.

Hawthorne Meadows is a development of 157 homes, offering well planned and high quality housing in this superbly convenient location, close to the various amenities in Barlborough village and junction 30 of the M1 motorway.



GROUND FLOOR



FIRST FLOOR

FEATURES

- New Build Family Home
- Two Bedrooms
- Ground Floor WC
- Great Starter Home
- Convenient Location
- 10 Year New Build Guarantee
- Open Plan Lounge / Diner
- Modern Bathroom
- Off Street Parking
- Coming Soon

ROOM DIMENSIONS

Ground Floor

LOUNGE/DINER	4930 x 4270 mm	16'2" x 14'
KITCHEN	3060 x 2130 mm	10' x 7'

First Floor

MASTER BEDROOM	4270 x 3270 mm	14' x 10'9"
BEDROOM 2	4270 x 2470 mm	14' x 8'1"



HAWTHORNE
MEADOWS

www.hawthornemeadows.co.uk

Hawthorne Meadows, Chesterfield Road
Barlborough S43 4TT



WILKINS VARDY

For more details contact Wilkins Vardy

01246 270 123

info@wilkins-varDY.co.uk

The Newland