



HAWTHORNE  
MEADOWS



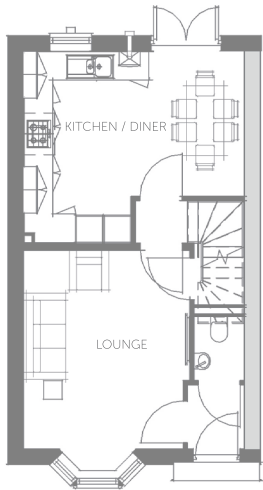
*we're*

# The Ashton

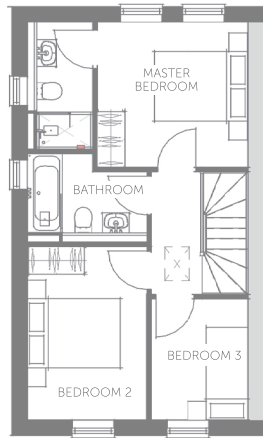
## THREE BEDROOMED, TWO BATHROOMED FAMILY HOME

The Ashton is a superb three bedroomed, two bathroomed house which offers 885 sq.ft. of contemporary styled accommodation including an open plan kitchen diner with patio doors opening onto the rear garden as well as a generous living room with bay window and master bedroom with en-suite shower room.

Hawthorne Meadows is a development of 157 homes, offering well planned and high quality housing in this superbly convenient location, close to the various amenities in Barlborough village and junction 30 of the M1 motorway.



GROUND FLOOR



FIRST FLOOR

## FEATURES

- New Build Family Home
- Three Bedrooms
- Ground Floor WC
- Great Family Home
- Convenient Location
- 10 Year New Build Guarantee
- Open Plan Kitchen / Diner
- Modern Bathroom & En-Suite
- Off Street Parking
- Coming Soon

## ROOM DIMENSIONS

### Ground Floor

LOUNGE	4330 x 3670 mm	14'2" x 12'
KITCHEN/DINER	4800 x 4190 mm	15'9" x 13'9"

### First Floor

MASTER BEDROOM	3280 x 3170 mm	10'9" x 10'5"
BEDROOM 2	3780 x 2610 mm	12'5" x 8'7"
BEDROOM 3	2660 x 2130 mm	8'9" x 7'
BATHROOM	2610 x 1940 mm	8'7" x 6'4"



HAWTHORNE  
MEADOWS

[www.hawthornemeadows.co.uk](http://www.hawthornemeadows.co.uk)

Hawthorne Meadows, Chesterfield Road  
Barlborough S43 4TT



WILKINS VARDY

For more details contact Wilkins Vardy

01246 270 123

[info@wilkins-vardy.co.uk](mailto:info@wilkins-vardy.co.uk)