



HAWTHORNE  
MEADOWS



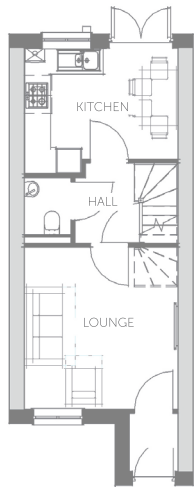
*The Chadwick*

# The Chadwick

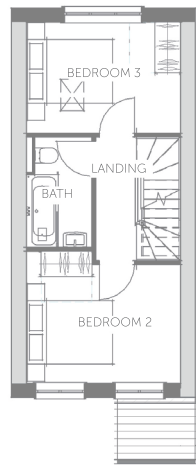
## THREE BEDROOMED FAMILY HOME

The Chadwick is a three bedroomed house which offers an impressive 966 sq.ft. of contemporary styled accommodation over three storeys, The property includes an open plan dining kitchen with patio doors opening onto the rear garden. The second floor bedroom also creates a haven away from the rest of the house, making this an ideal family home.

Hawthorne Meadows is a development of 157 homes, offering well planned and high quality housing in this superbly convenient location, close to the various amenities in Barlborough village and junction 30 of the M1 motorway.



GROUND FLOOR



FIRST FLOOR



SECOND FLOOR

## FEATURES

- New Build Family Home
- Three Bedrooms
- Ground Floor WC
- Three Storeys
- Convenient Location
- 10 Year New Build Guarantee
- Open Plan Dining Kitchen
- Modern Bathroom
- Off Street Parking
- Coming Soon

## ROOM DIMENSIONS

### Ground Floor

LOUNGE	3810 x 3720 mm	12'6" x 12'2"
KITCHEN	3100 x 2700 mm	10'2" x 8'10"

### First Floor

BEDROOM 2	3810 x 2460 mm	12'6" x 8'1"
BEDROOM 3	3810 x 2120 mm	12'6" x 6'11"

### Second Floor

MASTER BEDROOM	5620 x 3810 mm	18'5" x 12'6"
----------------	----------------	---------------



HAWTHORNE  
MEADOWS

[www.hawthornemeadows.co.uk](http://www.hawthornemeadows.co.uk)

Hawthorne Meadows, Chesterfield Road  
Barlborough S43 4TT



WILKINS VARDY

For more details contact Wilkins Vardy

01246 270 123

[info@wilkins-varDY.co.uk](mailto:info@wilkins-varDY.co.uk)

The Chadwick