



HAWTHORNE
MEADOWS



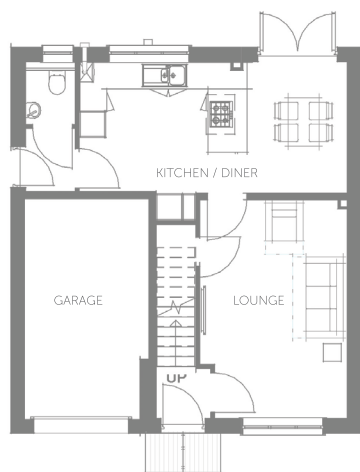
The Emerson

The Emerson

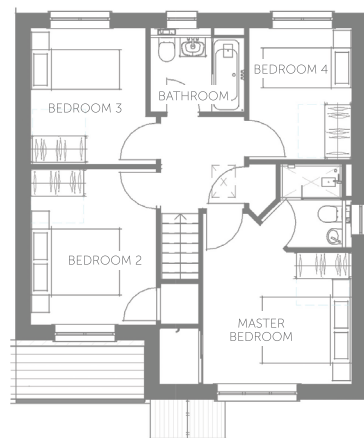
EXECUTIVE FOUR BED DETACHED FAMILY HOME

The Emerson is an impressive four bedroomed, two bathroomed detached family home which offers 1221 sq.ft. of contemporary styled accommodation including a spacious open plan dining kitchen with patio doors opening onto the rear garden, a large living room and master bedroom with en-suite shower room. The property also boasts a single garage and off street parking.

Hawthorne Meadows is a development of 157 homes, offering well planned and high quality housing in this superbly convenient location, close to the various amenities in Barlborough village and junction 30 of the M1 motorway.



GROUND FLOOR



FIRST FLOOR

FEATURES

- New Build Family Home
- Four Bedrooms
- Ground Floor WC
- Attached Garage
- Convenient Location
- 10 Year New Build Guarantee
- Open Plan Dining Kitchen
- Two Bathrooms
- Off Street Parking
- Coming Soon

ROOM DIMENSIONS

Ground Floor

LOUNGE	5030 x 3050 mm	16'6" x 10'
KITCHEN/DINER	6140 x 3030 mm	20'2" x 9'11"
GARAGE	5030 x 2940 mm	16'6" x 9'8"

First Floor

MASTER BEDROOM	4280 x 3060 mm	14'1" x 10'
BEDROOM 2	3570 x 2940 mm	11'9" x 9'8"
BEDROOM 3	3150 x 2940 mm	10'4" x 9'8"
BEDROOM 4	3030 x 2400 mm	9'11" x 7'10"
BATHROOM	2260 x 2000 mm	7'5" x 6'7"



HAWTHORNE
MEADOWS

www.hawthornemeadows.co.uk

Hawthorne Meadows, Chesterfield Road
Barlborough S43 4TT



WILKINS VARDY

For more details contact Wilkins Vardy

01246 270 123

info@wilkins-varDY.co.uk

The Emerson